

Solscape E1

Composición	<i>polyester fibre coated with pvc</i>	
Factor de abertura	<i>NBN EN 410</i>	4 %
Peso	<i>NF EN 12127</i>	415 g/m ²
Grosor	<i>ISO 5084</i>	0.54 mm
Clasificación de fuego		
Francia	<i>NF P92-503</i>	M1
EUA	<i>NFPA 701</i>	FR



E1-10001
(black)

E1-1003
(white)

E1-2004
(sand)

E1-2005
(caramel)



E1-2006
(ecru)

E1-2007
(linnen)

E1-3002
(grey)

E1-3003
(antraziet)



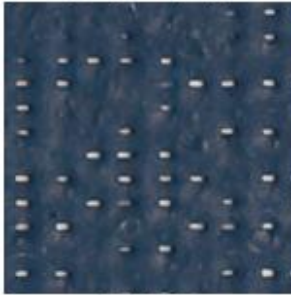
E1-3004

E1-3005

E1-4003

E1-4004

(elephant grey)



E1-6005

(light grey)



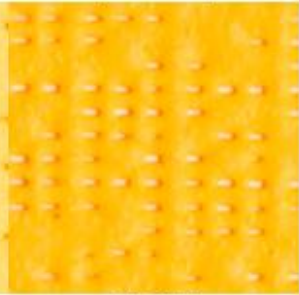
E1-6006

(red)



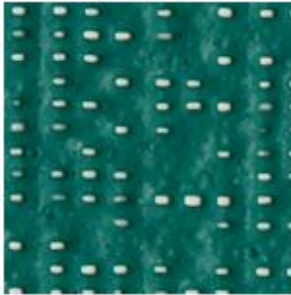
E1-7003

(bordeaux)



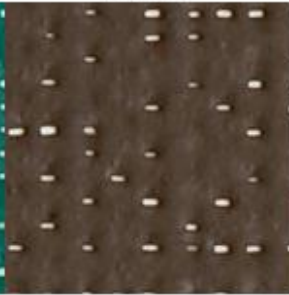
E1-7004

(blue-grey)



E1-8006

(purple)



E1-9003

(light yellow)



(yellow)

